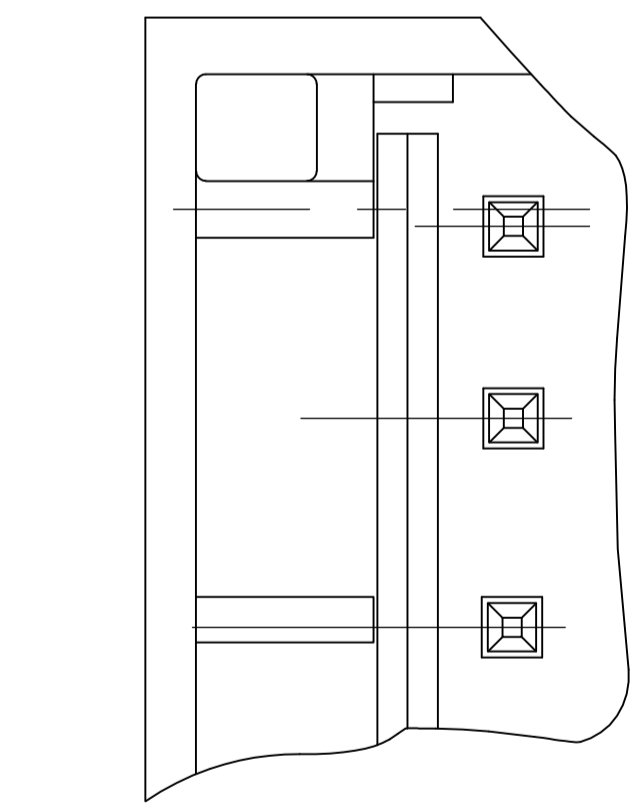
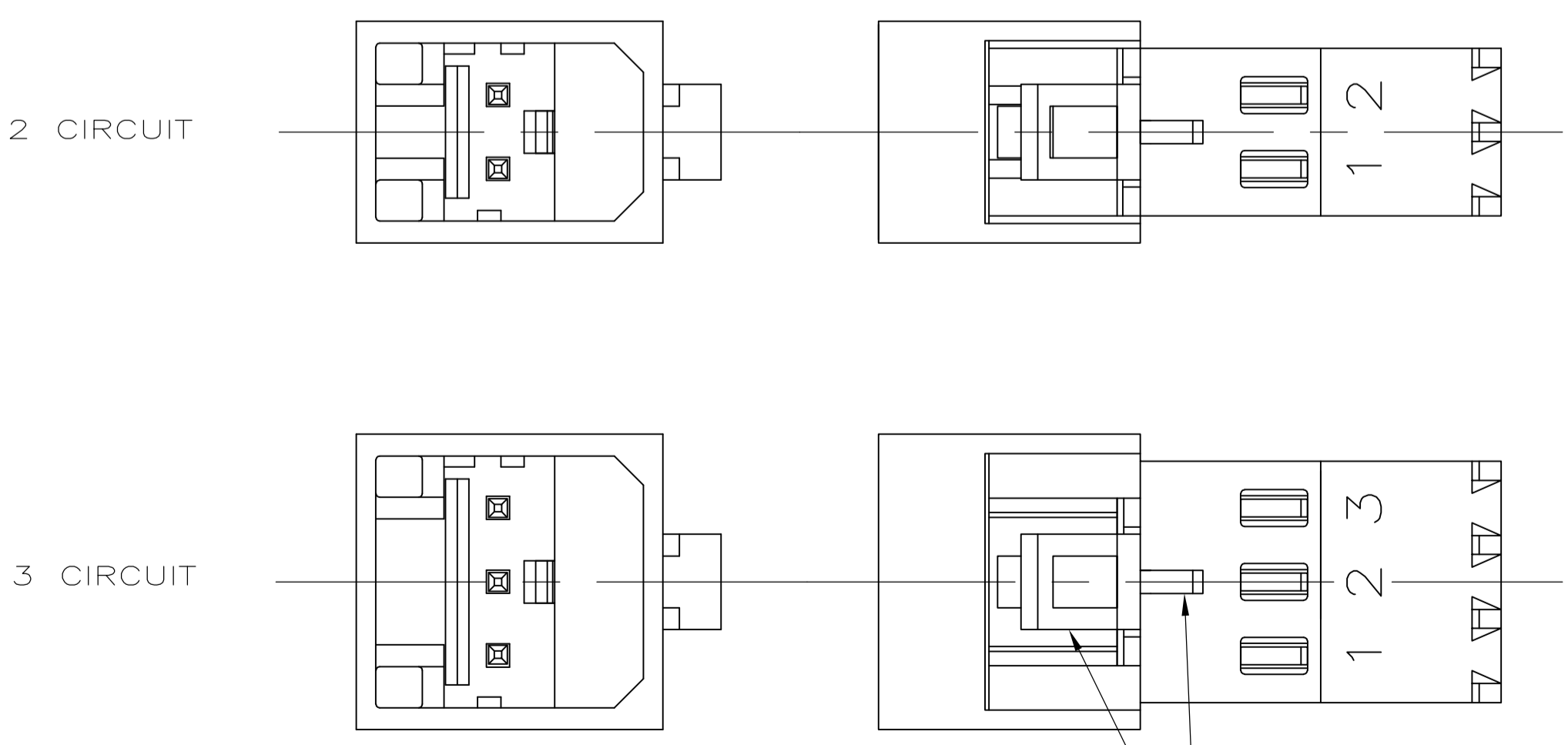
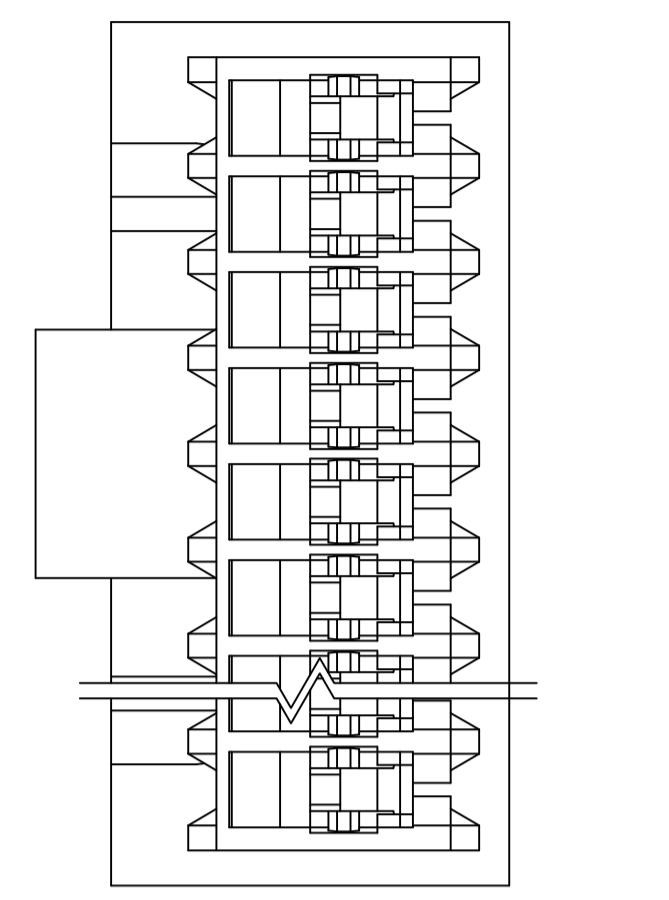
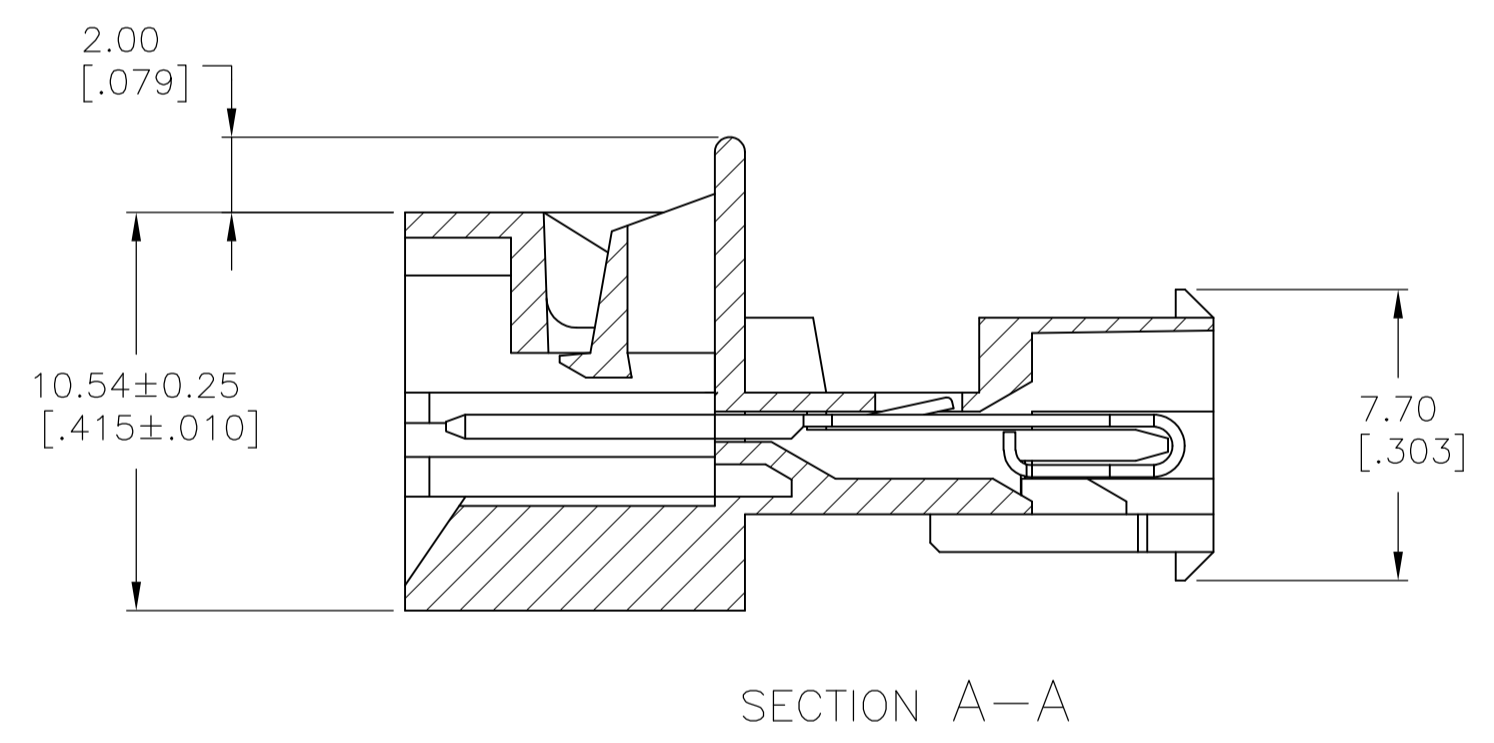
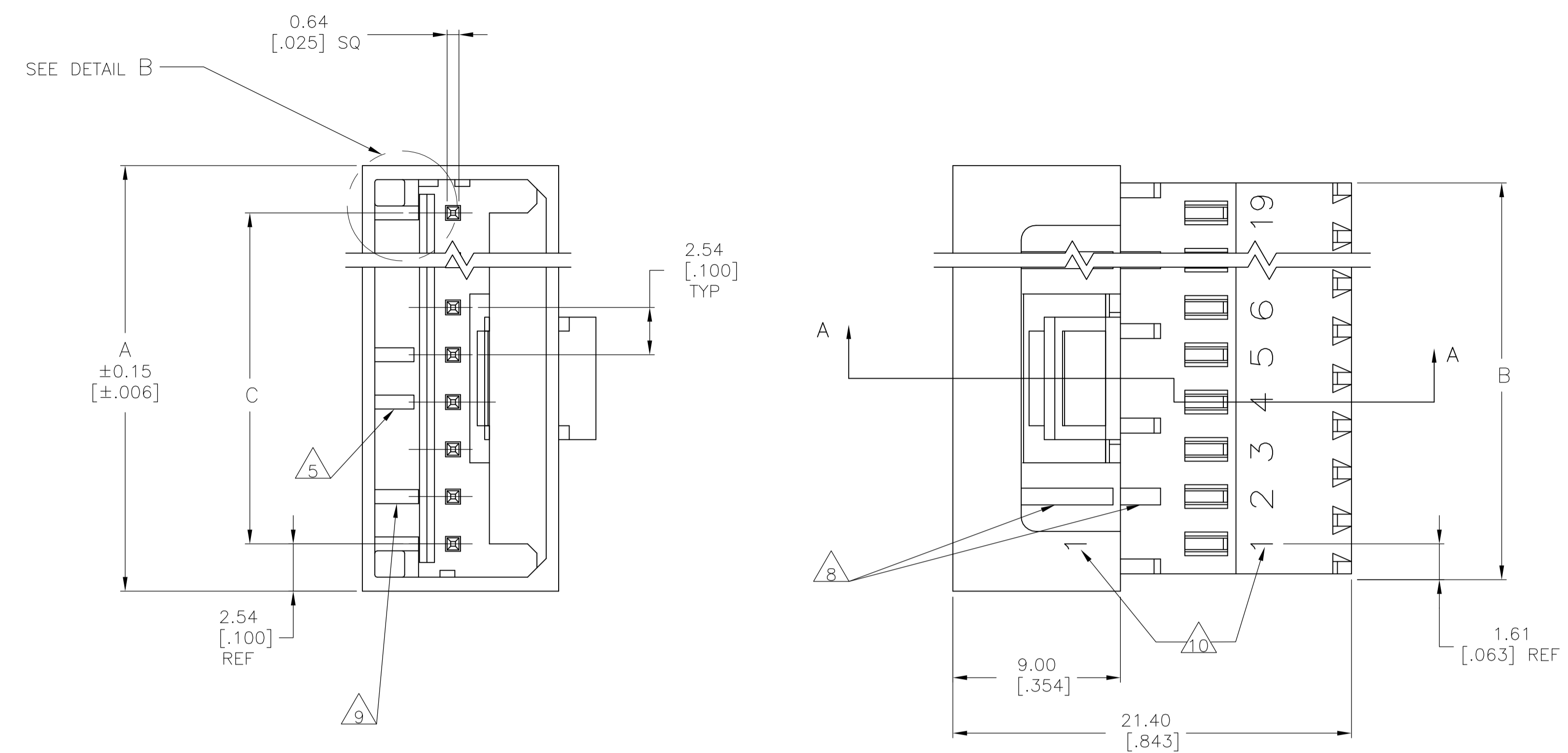
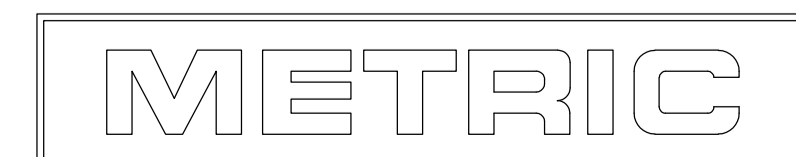


| LOC | | DIST | | REVISIONS | | | |
|-----|--------------|---------------|---------|-----------|-------|-----|------|
| CM | 00 | REV | DATE | BY | APP'D | REV | DATE |
| D1 | RECEIVED PER | ECO-08-013568 | 02JUN08 | HMR | DB | | |



- 1 MATERIAL:
HOUSING- NYLON UL94V-2 (BLUE).
CONTACTS- 0.30 [.012] THK COPPER ALLOY
DUAL PLATING : GOLD .00038[.000015] MIN THK
ONPOST, BRIGHT TIN-LEAD 0.00203[.000080] MIN
THK 647018-2 THRU 1-647018-9 OR MATTE TIN
0.00203[.000080] MIN THK. FOR 3-647018-2 THRU
4-647018-9 ON WIRE SLOT, WITH NICKEL UNDERPLATE
.00127[.000050] MIN THK ALL OVER.
- 2 CONTACTS ACCEPT 26 AWG (0.12-0.15 mm²) TIN PLATED
SOLID, CONCENTRIC FUSED STRANDED, OR
CONCENTRIC STRANDED (7 STRANDS) WIRE
WITH 1.52 [.060] MAX INSULATION DIAMETER.
- 3 MATES WITH STANDARD MTA-100 CONNECTORS:
OF THE SAME CIRCUIT SIZES
WITH SIMILARLY PLATED CONTACTS
WITH POLARIZING TABS-CIRCUIT SIZES 4-19 ONLY
WITHOUT POLARIZING TABS-CIRCUIT SIZES 2 & 3.

DOES NOT MATE WITH MTA-100 CONNECTORS:
WITH POLARIZING TABS-CIRCUIT SIZES 2 & 3 ONLY.
(SEE DETAIL A)
WITH BLOCKED CIRCUITS -ALL CIRCUIT SIZES.
NOT RECOMMENDED FOR MATING WITH MTA-100
CONNECTOR WITHOUT POLARIZING TABS.
CIRCUIT SIZES 4-19.
- 4 ACCESSORIES:
REPLACEMENT IDC CONTACTS: 647032-3.
COVERS: SEE TABLE
- 5 QUANTITY OF CENTRALLY POSITIONED RAILS
VARIES WITH CIRCUIT SIZE. (SEE TABLE)
LOCATION MAY DIFFER FROM EXAMPLE SHOWN.
- 6 DIMENSIONS IN BRACKETS ARE IN INCHES.
- 7 SIMILAR SIZED LOCK AND SINGLE TAB USED
OR CIRCUITS 4 & 5.
- 8 QUANTITY OF GUSSET RIBS VARIES WITH
CIRCUIT SIZE (SEE TABLE).
LOCATION MAY DIFFER FROM EXAMPLE SHOWN.
- 9 INNER END RAIL PAIR NOT PRESENT FOR
CIRCUIT SIZES 2 OR 3.
- 10 CIRCUIT ID MAY APPEAR FULLY NUMBERED OR SHOWING
LOCATION 1 ONLY DEPENDING ON CIRCUIT SIZE.



| | | | |
|--|--|------------------------------|---|
| THIS DRAWING IS A CONTROLLED DOCUMENT. | | DRN R. LEWIS 30--98 | Tyco Electronics Corporation Harrisburg, Pa 17105-3608 |
| DIMENSIONS: mm [INCHES] | | CHK R. SWING 30--98 | |
| TOLERANCES UNLESS OTHERWISE SPECIFIED: | | APP'D J. FILLIS 30--98 | NAME |
| 0 PLG ± - | | | MTA-100 POSTED CONNECTOR |
| 1 PLG ± - | | | ASSEMBLY, CLOSED END, 26 AWG |
| 2 PLG ± 0.20 [.007] | | | PRODUCT SPEC |
| 3 PLG ± - | | | APPLICATION SPEC |
| 4 PLG ± - | | | SIZE |
| ANGLES ± - | | | CAGE CODE |
| FINISH | | | DRAWING NO |
| | | | RESTRICTED TO |
| | | | SCALE |
| | | | SHEET |
| | | | REV |

| 1-640642-9 | 1-643077-9 | 4 | 2 | 45.72 | 1.800 | 48.95 | 1.927 | 50.80 | 2.000 | 19 | 4-647018-9 |
|------------|----------------------|--------------------|----------------------|-------|-------|-------|-------|-------|-------|-----------------|------------|
| 1-640642-8 | 1-643077-8 | 4 | 2 | 43.18 | 1.700 | 46.41 | 1.827 | 48.26 | 1.900 | 18 | 4-647018-8 |
| 1-640642-7 | 1-643077-7 | 4 | 2 | 40.64 | 1.600 | 43.86 | 1.727 | 45.72 | 1.800 | 17 | 4-647018-7 |
| 1-640642-6 | 1-643077-6 | 4 | 2 | 38.10 | 1.500 | 41.32 | 1.627 | 43.18 | 1.700 | 16 | 4-647018-6 |
| 1-640642-5 | 1-643077-5 | 4 | 2 | 35.56 | 1.400 | 38.78 | 1.527 | 40.64 | 1.600 | 15 | 4-647018-5 |
| 1-640642-4 | 1-643077-4 | 4 | 2 | 33.02 | 1.300 | 36.24 | 1.427 | 38.10 | 1.500 | 14 | 4-647018-4 |
| 1-640642-3 | 1-643077-3 | 4 | 2 | 30.48 | 1.200 | 33.70 | 1.327 | 35.56 | 1.400 | 13 | 4-647018-3 |
| 1-640642-2 | 1-643077-2 | 2 | 1 | 27.94 | 1.100 | 31.16 | 1.227 | 33.02 | 1.300 | 12 | 4-647018-2 |
| 1-640642-1 | 1-643077-1 | 2 | 1 | 25.40 | 1.000 | 28.62 | 1.127 | 30.48 | 1.200 | 11 | 4-647018-1 |
| 1-640642-0 | 1-643077-0 | 2 | 1 | 22.86 | .900 | 26.08 | 1.027 | 27.94 | 1.100 | 10 | 4-647018-0 |
| 640642-9 | 643077-9 | 2 | 1 | 20.32 | .800 | 23.54 | .927 | 25.40 | 1.000 | 9 | 3-647018-9 |
| 640642-8 | 643077-8 | 2 | 0 | 17.78 | .700 | 21.00 | .827 | 22.86 | .900 | 8 | 3-647018-8 |
| 640642-7 | 643077-7 | 0 | 0 | 15.24 | .600 | 18.46 | .727 | 20.32 | .800 | 7 | 3-647018-7 |
| 640642-6 | 643077-6 | 0 | 0 | 12.70 | .500 | 15.92 | .627 | 17.78 | .700 | 6 | 3-647018-6 |
| 640642-5 | 643077-5 | 0 | 0 | 10.16 | .400 | 13.38 | .527 | 15.24 | .600 | 5 | 3-647018-5 |
| 640642-4 | 643077-4 | 0 | 0 | 7.62 | .300 | 10.84 | .427 | 12.70 | .500 | 4 | 3-647018-4 |
| 640642-3 | 643077-3 | 0 | 0 | 5.08 | .200 | 8.30 | .327 | 10.16 | .400 | 3 | 3-647018-3 |
| - | 643077-2 | 0 | 0 | 2.54 | .100 | 5.76 | .227 | 7.62 | .300 | 2 | 3-647018-2 |
| 1-640642-9 | 1-643077-9 | 4 | 2 | 45.72 | 1.800 | 48.95 | 1.927 | 50.80 | 2.000 | 19 | 1-647018-9 |
| 1-640642-8 | 1-643077-8 | 4 | 2 | 43.18 | 1.700 | 46.41 | 1.827 | 48.26 | 1.900 | 18 | 1-647018-8 |
| 1-640642-7 | 1-643077-7 | 4 | 2 | 40.64 | 1.600 | 43.86 | 1.727 | 45.72 | 1.800 | 17 | 1-647018-7 |
| 1-640642-6 | 1-643077-6 | 4 | 2 | 38.10 | 1.500 | 41.32 | 1.627 | 43.18 | 1.700 | 16 | 1-647018-6 |
| 1-640642-5 | 1-643077-5 | 4 | 2 | 35.56 | 1.400 | 38.78 | 1.527 | 40.64 | 1.600 | 15 | 1-647018-5 |
| 1-640642-4 | 1-643077-4 | 4 | 2 | 33.02 | 1.300 | 36.24 | 1.427 | 38.10 | 1.500 | 14 | 1-647018-4 |
| 1-640642-3 | 1-643077-3 | 4 | 2 | 30.48 | 1.200 | 33.70 | 1.327 | 35.56 | 1.400 | 13 | 1-647018-3 |
| 1-640642-2 | 1-643077-2 | 2 | 1 | 27.94 | 1.100 | 31.16 | 1.227 | 33.02 | 1.300 | 12 | 1-647018-2 |
| 1-640642-1 | 1-643077-1 | 2 | 1 | 25.40 | 1.000 | 28.62 | 1.127 | 30.48 | 1.200 | 11 | 1-647018-1 |
| 1-640642-0 | 1-643077-0 | 2 | 1 | 22.86 | .900 | 26.08 | 1.027 | 27.94 | 1.100 | 10 | 1-647018-0 |
| 640642-9 | 643077-9 | 2 | 1 | 20.32 | .800 | 23.54 | .927 | 25.40 | 1.000 | 9 | 647018-9 |
| 640642-8 | 643077-8 | 2 | 0 | 17.78 | .700 | 21.00 | .827 | 22.86 | .900 | 8 | 647018-8 |
| 640642-7 | 643077-7 | 0 | 0 | 15.24 | .600 | 18.46 | .727 | 20.32 | .800 | 7 | 647018-7 |
| 640642-6 | 643077-6 | 0 | 0 | 12.70 | .500 | 15.92 | .627 | 17.78 | .700 | 6 | 647018-6 |
| 640642-5 | 643077-5 | 0 | 0 | 10.16 | .400 | 13.38 | .527 | 15.24 | .600 | 5 | 647018-5 |
| 640642-4 | 643077-4 | 0 | 0 | 7.62 | .300 | 10.84 | .427 | 12.70 | .500 | 4 | 647018-4 |
| 640642-3 | 643077-3 | 0 | 0 | 5.08 | .200 | 8.30 | .327 | 10.16 | .400 | 3 | 647018-3 |
| - | 643077-2 | 0 | 0 | 2.54 | .100 | 5.76 | .227 | 7.62 | .300 | 2 | 647018-2 |
| DUST COVER | STRAIN RELIEF COVERS | QTY OF GUSSET RIBS | QTY OF CENTRAL RAILS | MM | IN | MM | IN | MM | IN | NO. OF CIRCUITS | PART NO |
| △4 | ACCESSORIES | △8 | △5 | C | | B | | A | | | |

THIS DRAWING IS A CONTROLLED DOCUMENT.

| | | | | | |
|-------------------------|--|---------------|-----------|---|---------------|
| DIMENSIONS: mm [INCHES] | TOLERANCES UNLESS OTHERWISE SPECIFIED: | DIN 30-98 | 30-98 | Tyco Electronics Corporation Harrisburg, Pa 17105-3608 | |
| 0 PLC ± - | 1 PLC ± - | 30-98 | 30-98 | | |
| 2 PLC ± - | 3 PLC ± - | APVD J. ELLIS | | MTA-100 POSTED CONNECTOR ASSEMBLY, CLOSED END, 26 AWG | |
| 4 PLC ± - | ANGLES ± - | PRODUCT SPEC | | | |
| MATERIAL | FINISH | SIZE | CAGE CODE | DRAWING NO | RESTRICTED TO |
| △1 | △1 | A1 | 00779 | 647018 | - |
| CUSTOMER DRAWING | | SCALE | SHEET | REV | D1 |
| | | 1:1 | 2 OF 2 | | |

